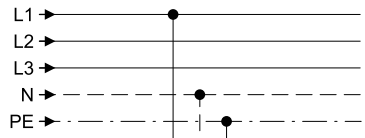
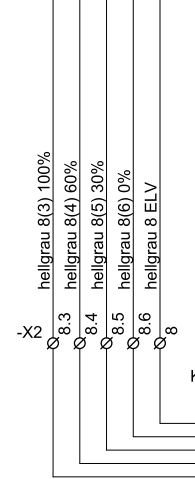
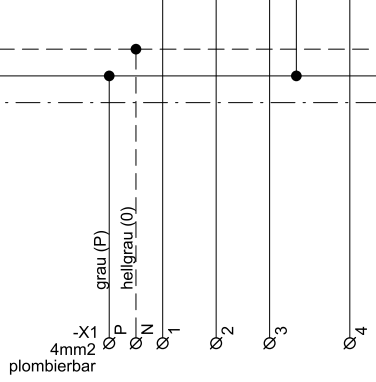
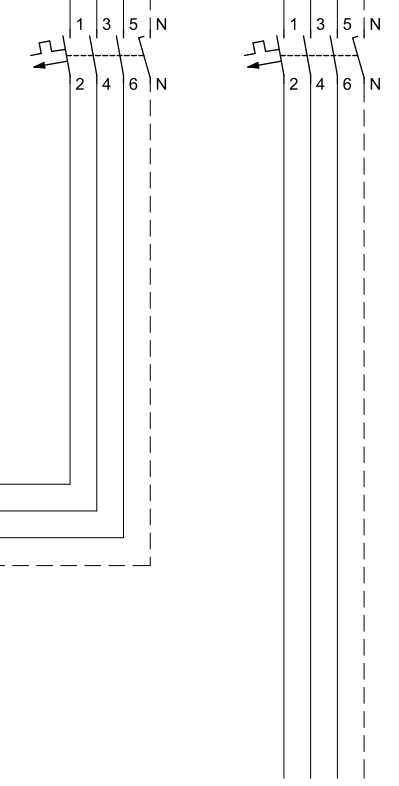
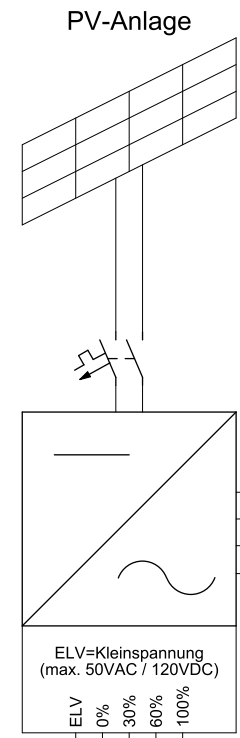
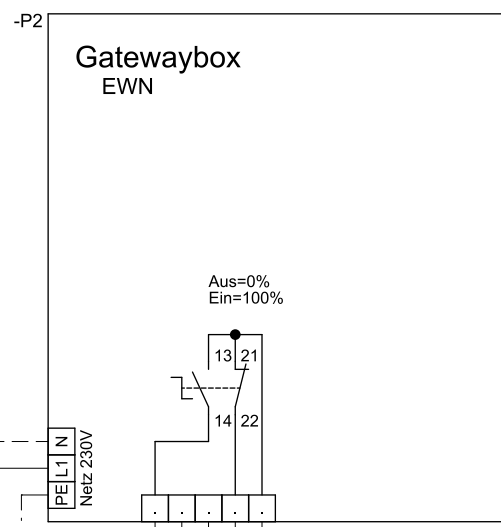
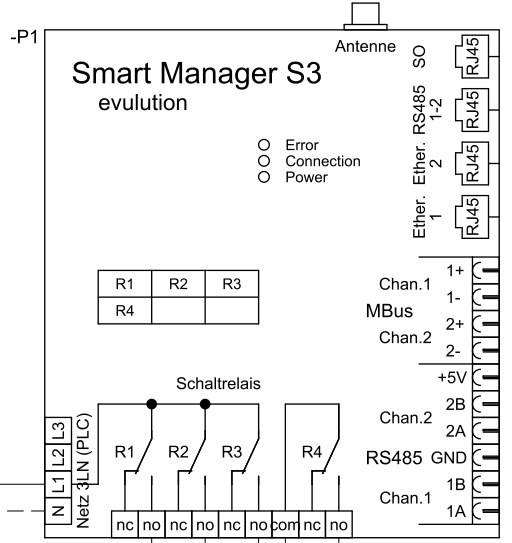
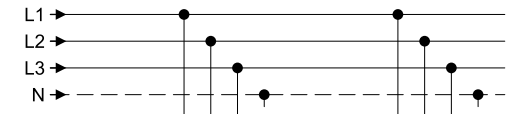


Netz Kunde ungemessen



Netz-Kunde gemessen



Kabelverbindung Systemabhängig (PVA Lieferant)
Empfehlung Kabel 4x2x0.6mm2

Leiterquerschnitte und Bezeichnungen
gemäss Werkvorschriften EWN

Steuerung PV-Anlage > 30kVA

Nr. Vorlage 2-20250213



EWN Nidwalden
Wigasse 3
6371 Oberdorf

Blatt	2	Aenderung		Gezeichnet
Anz. Blatt	2	1	13.02.25 n-o-bs	
Elektroschema		2		
		3		